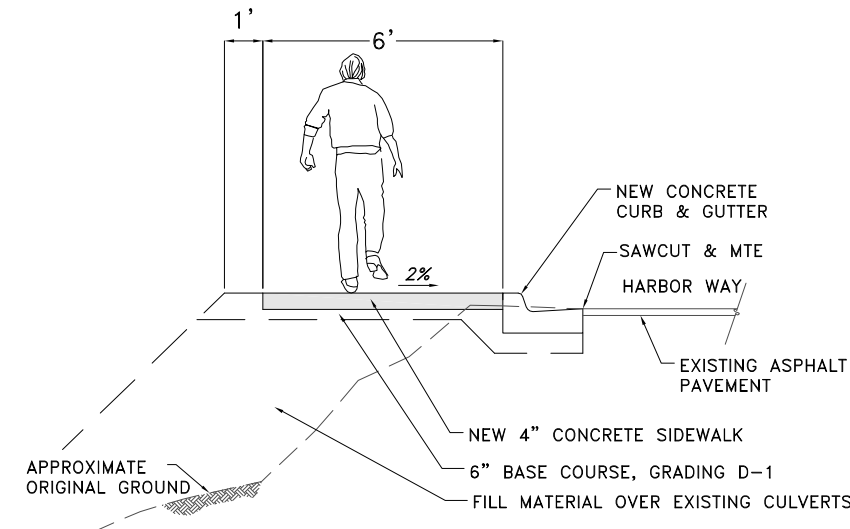
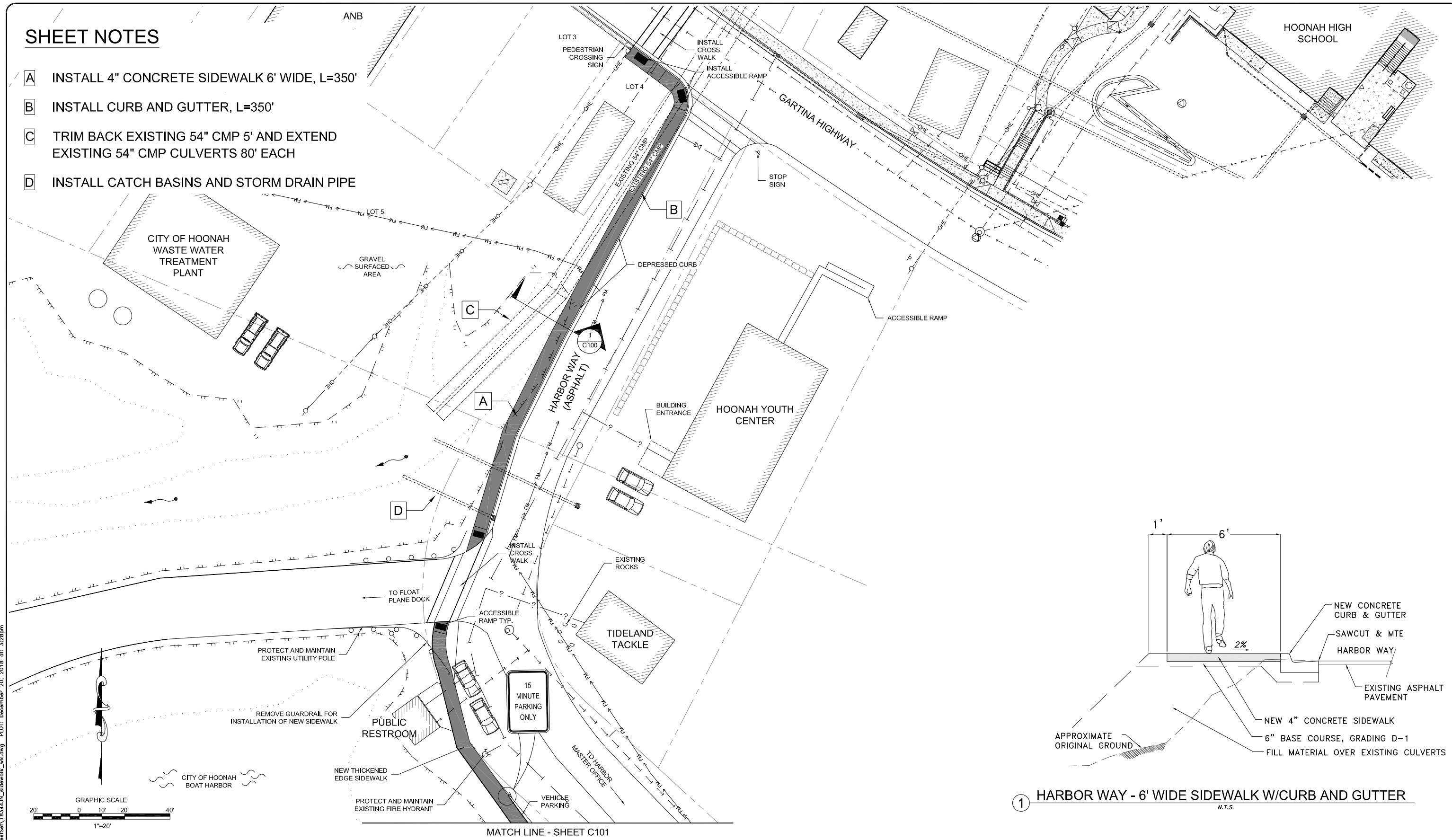
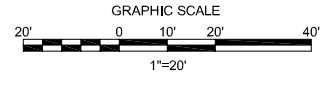


SHEET NOTES

- A** INSTALL 4" CONCRETE SIDEWALK 6' WIDE, L=350'
- B** INSTALL CURB AND GUTTER, L=350'
- C** TRIM BACK EXISTING 54" CMP 5' AND EXTEND EXISTING 54" CMP CULVERTS 80' EACH
- D** INSTALL CATCH BASINS AND STORM DRAIN PIPE



① HARBOR WAY - 6' WIDE SIDEWALK W/CURB AND GUTTER
N.T.S.



P:\2018\18344JN-COH-Harbor_Way_Sidewalk\18344JN_sidewalk_wk.dwg PLOT: December 20, 2018 dt: 3:28pm

DESIGN	JMP
DRAWN	ECR
CHECK	JMP
APPROVED	JMP

No.	DATE	REVISION

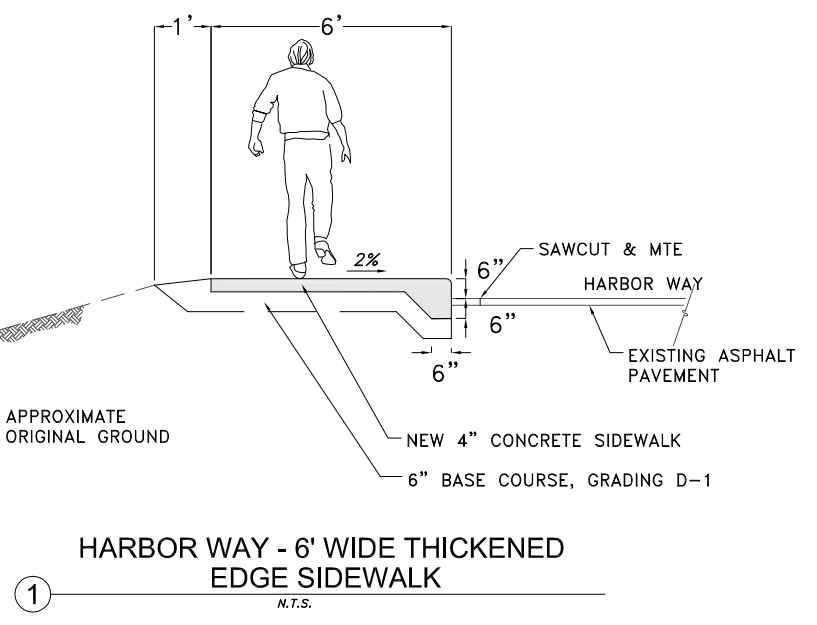
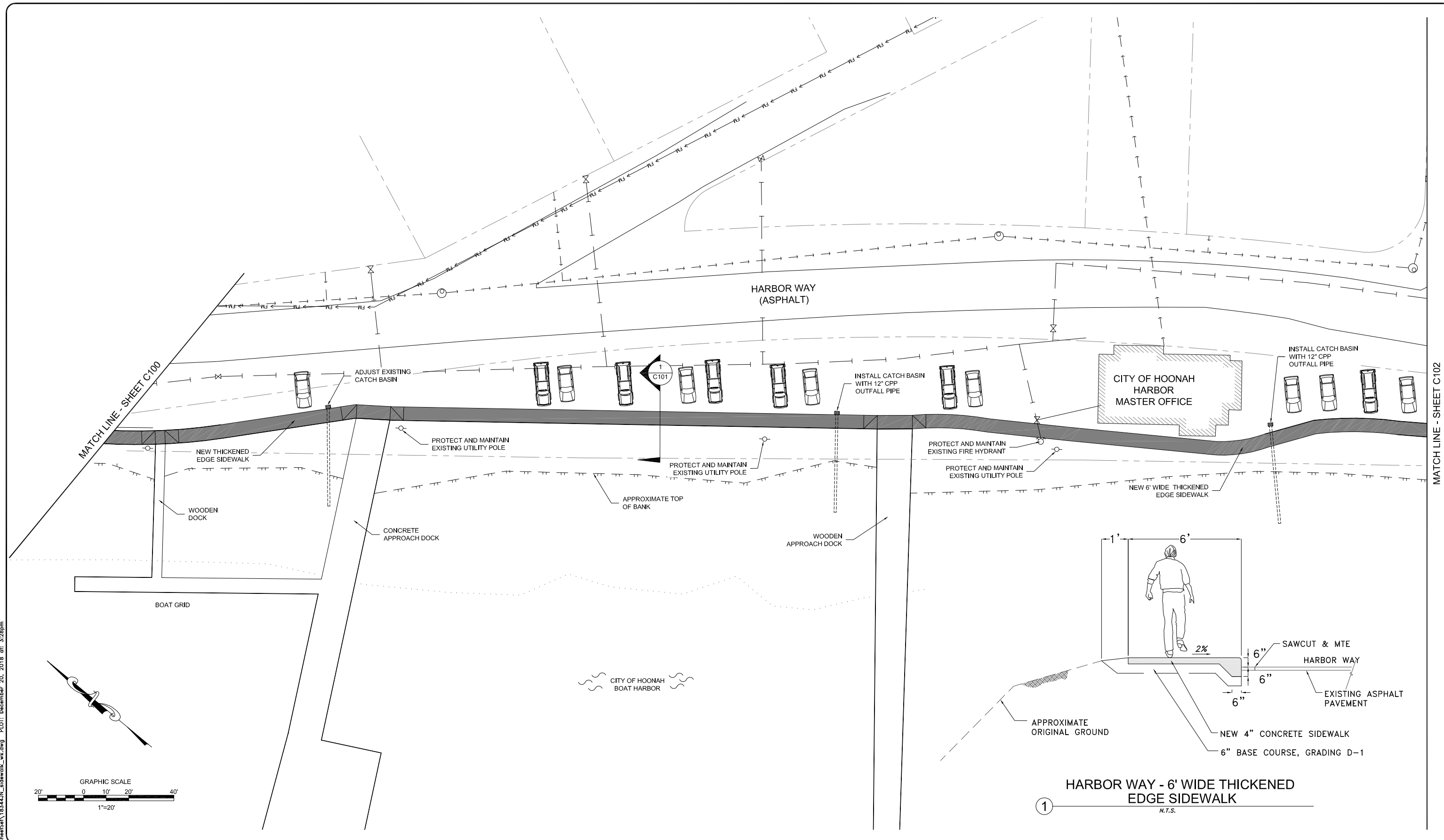
PDC ENGINEERS
PLAN • DESIGN • CONSTRUCT
6205 Glacier Highway, Juneau, Alaska 99801
907.780.6060 | AECC605

HARBOR WAY PEDESTRIAN IMPROVEMENTS & PITT ISLAND CEMETERY WALKWAY
CITY OF HOONAH, ALASKA

HARBOR WAY SIDEWALK PLAN VIEW

DATE: Dec. 20, 2018
PDC No. 18344JN
SHEET C100

P:\2018\18344JN-COH_Harbor_Way\SheetSet\18344JN_sidewalk_wk.dwg PLOT: December 20, 2018 dt: 3:28pm



DESIGN	JMP
DRAWN	ECR
CHECK	JMP
APPROVED	JMP

No.	DATE	REVISION

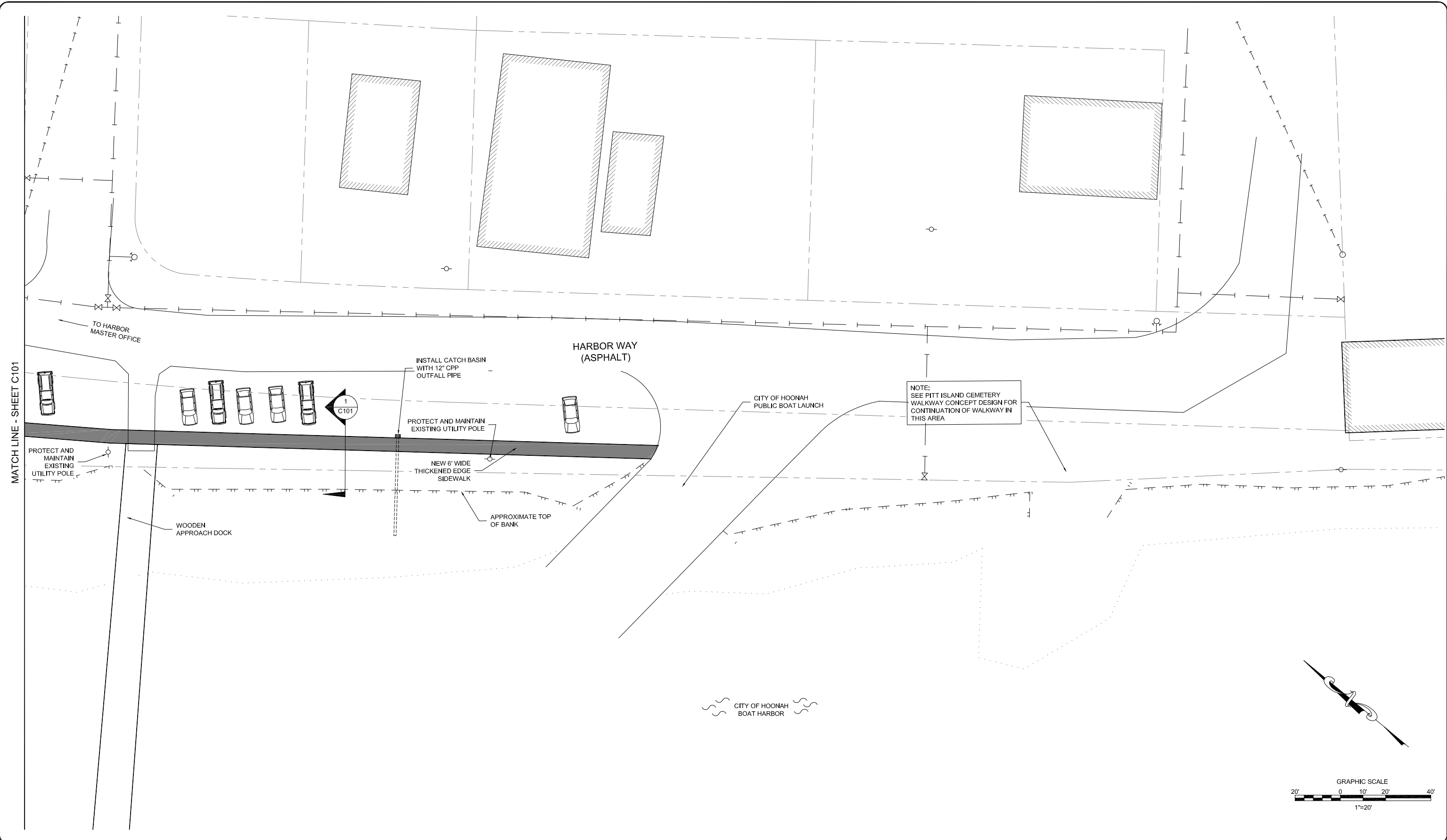
PDC ENGINEERS
PLAN • DESIGN • CONSTRUCT
6205 Glacier Highway, Juneau, Alaska 99801
907.780.6060 | AECC605

HARBOR WAY PEDESTRIAN IMPROVEMENTS & PITT ISLAND CEMETERY WALKWAY
CITY OF HOONAH, ALASKA

HARBOR WAY SIDEWALK PLAN VIEW

DATE: Dec. 20, 2018
PDC No. 18344JN
SHEET C101

P:\2018\18344JN-COH-Harbor_Way\SheetSet\18344JN_sidewalk_wk.dwg PLOT: December 20, 2018 dt: 3:28pm



DESIGN	JMP
DRAWN	ECR
CHECK	JMP
APPROVED	JMP

No.	DATE	REVISION

PDC ENGINEERS
 PLAN • DESIGN • CONSTRUCT
 6205 Glacier Highway, Juneau, Alaska 99801
 907.780.6060 | AECC605

HARBOR WAY PEDESTRIAN IMPROVEMENTS & PITT ISLAND CEMETERY WALKWAY
 CITY OF HOONAH, ALASKA

HARBOR WAY SIDEWALK PLAN VIEW

DATE: Dec. 20, 2018
PDC No. 18344JN
SHEET C102